



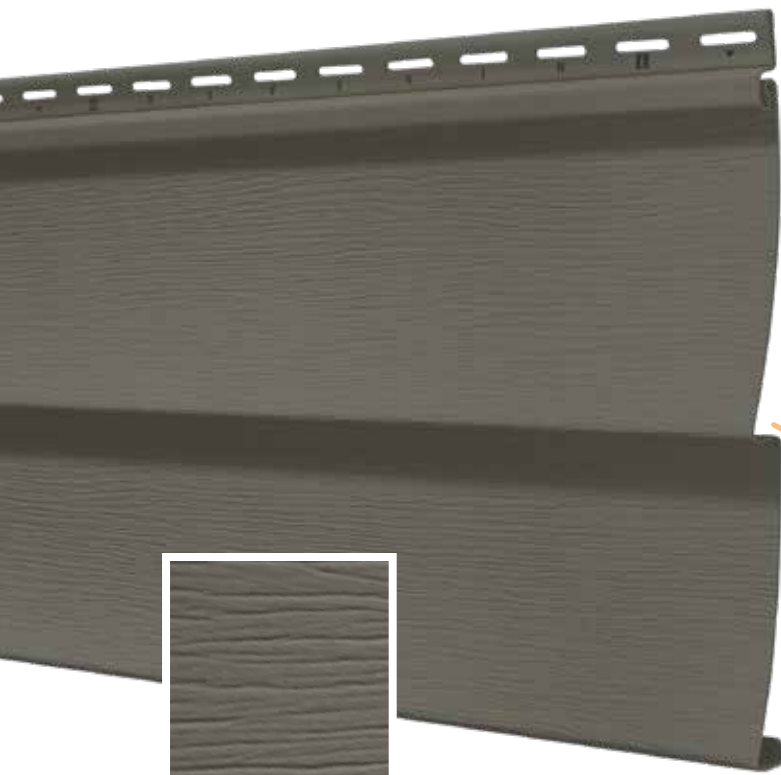
WOLVERINE
by certainteed

MADE TO ENDURE



PRESTIGE[®] 044
VINYL SIDING

PRESTIGE[®] 044



Low-gloss natural oak woodgrain, with a hand-crafted look.



Double-thick nailing hem adds strength where the panel is attached to the wall, resisting wind loads and helping to smooth wall irregularities.



Insta-Lock™ locking system holds panels securely, while allowing expansion and contraction in changing temperatures.



9/16" deep panel projection creates enhanced shadow lines with the look of real wood.



.044" thickness offers lasting strength, while precise dimensional consistency ensures a snug fit and tight laps.

WOLVERINE STUD LOCATOR makes installation easier and more accurate. Stud Locator adds letters to the panel's nail hem. The letters help ensure proper nailing into studs and help find studs faster.



16"

Installing vinyl siding is a smart investment, with **one of the highest returns** of any major home remodeling project when it's time to sell.

94.7%

**RETURN ON INVESTMENT
FOR VINYL SIDING**

Source: Remodeling Magazine
2023 Cost vs. Value Report

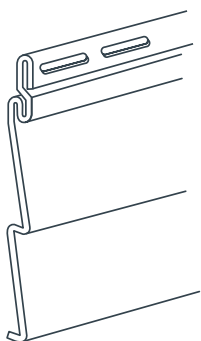
WOLVERINE PRODUCTS OFFER MORE THAN JUST PREMIUM PROTECTION

- Low maintenance, never needs painting, staining, or caulking.
- Engineered to be resilient against the elements and immune to moisture damage.
- Mimics the beauty of natural wood with woodgrain textures.
- Designed to be impact resistant and durable.
- Recyclable after use making it a smart, sustainable choice.

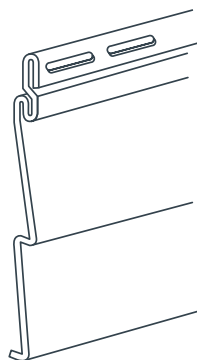


*Expressions® Colors - Express Yourself with Bold Color! This rich, bold palette of deep colors, using TruColor® technology, that give your home a striking new look.

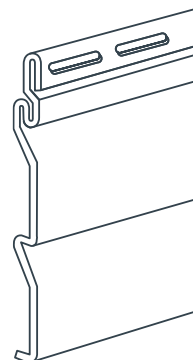
PRESTIGE 044 SIDING PANELS COME IN THREE PROFILES:



Double 4"
Traditional Clapboard
Exposure: 8"
Length: 12' 6"



Double 4-1/2"
Traditional Clapboard
Exposure: 9"
Length: 12' 1"



Double 4-1/2"
Dutch Lap
Exposure: 9"
Length: 12' 1"

PRESTIGE® 044

DURABILITY AND RELIABILITY THAT ALLOW YOU TO MAKE YOUR MARK FOR GENERATIONS

Complete the Look with Finishing Elements™.

Wolverine® offers a complete line of vinyl products including soffit and accessories. Make your mark on any job by using accent products like Shingles or Board & Batten to add the perfect finishing touches.



Heartwood™ PRO & Heartwood™



Board & Batten



Soffit



Accessories